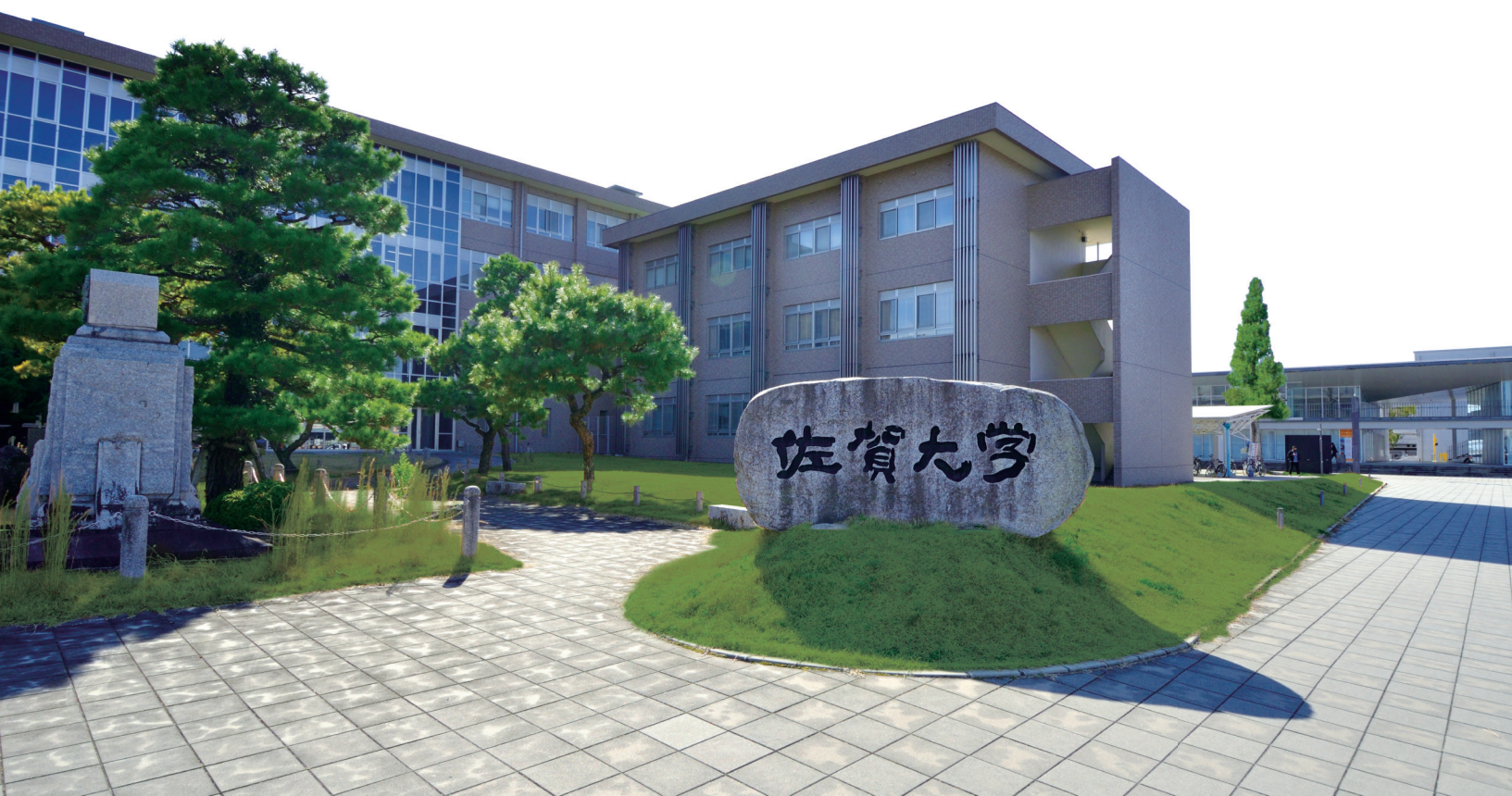




## Overview of Saga University





# Welcome to Saga



## ● Landscape





# Welcome to Saga



## ● Ceramics



Main firing



Arita ware plate



Arita ware jar



Overglaze painting

## ● Food



Champon



Sashimi of Sea Urchin



Sashimi of Squid



Saga Beef

## ● Traditional buildings



Karatsu Castle



Yutoku Inari Shrine



Matsubara Shrine



Saga Shrine

## ● Festivals



Karatsu Kunchi



Matsubara Shrine Festival



# Introduction

## ● Saga University Charter

Saga University and its Members hereby declare that the University, based on the educational and professional achievements it has produced in every field of study, shall act in accordance with the following principles, aiming to develop with the community for the future, in the resourceful natural environment with cultural and historical backgrounds which have long been cultivated by the exchange with other regions.

### Attractive University

The University shall create an attractive campus where students can study and act positively with their own purposes.

### Creation and Inheritance

The University shall commit itself to the creation and inheritance of human wisdom so that humans can live together with nature.

### Education-Oriented University

The University shall provide a high quality of education in the belief that higher education will lead the society.

### Promotion of Research

The University shall continue to raise its academic level to convey its original achievements to the world.

### Contribution to Society

The University shall deal with problems of the community from educational and professional viewpoints.

### Contribution to the International Society

The University, as a major intellectual organization in Asia, shall contribute to the development of the international society.

### Evaluation and Improvement

The University shall accomplish its mission as a national university located in Saga through constant evaluation and improvement of its achievements.





# Introduction

## ● The Future of Saga University – Vision 2030

Saga University has formulated "The Future of Saga University – Vision 2030" as a compass to indicate "our future" that the University should pursue as an institution of higher education, based on the "Saga University Charter," which is the University's philosophy. All members of the university, including students, will take on challenges with "aspiration" and create the future to realize the philosophy stated in the Saga University Charter. We aim to be a university that continues to develop together with the local community toward the future.

### Education

We will develop human resources capable of building a sustainable society through collaboration with diverse people, based on flexible intelligence and the ability to take action to venture into unknown areas.

### Research

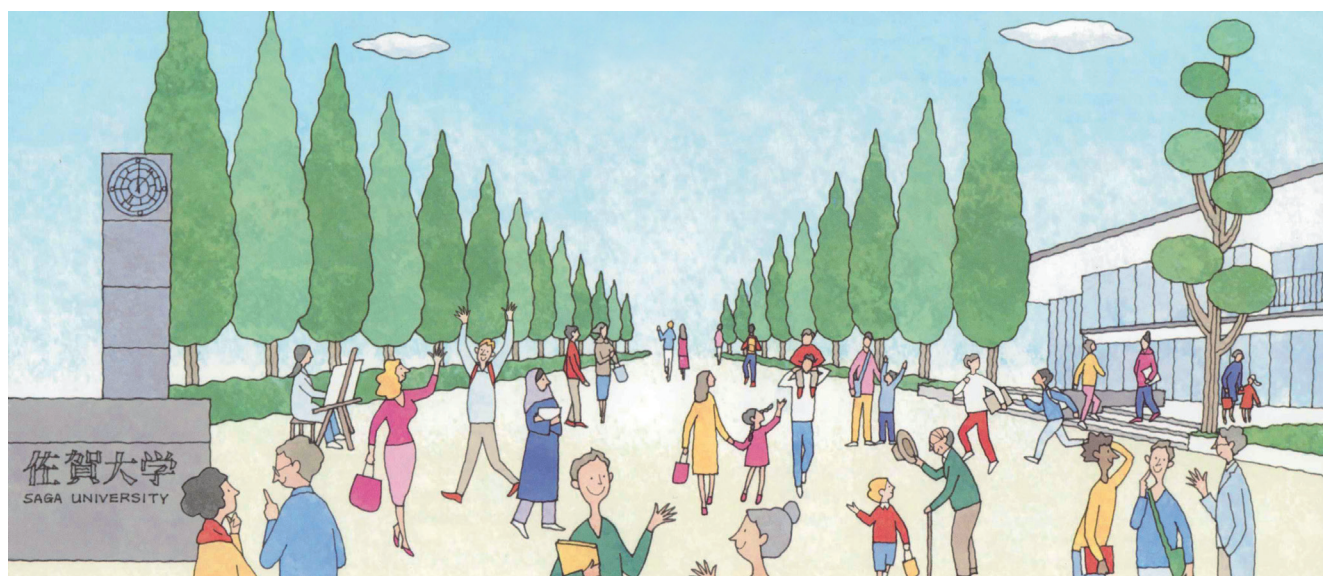
Toward the realization of a sustainable society and the realization of safety, security, and a rich and high quality of life in local communities, we will promote the development of researchers, create assets of knowledge, and strongly promote research and innovation that will contribute to the development of local communities.

### Contribution to Society

Aiming to be a university that plays a role in social change in Saga Prefecture and surrounding areas, we will contribute to the realization of a sustainable regional society through the advancement of education and research activities through the promotion of industry-academia-government collaboration.

### University Administration

The President will make effective and maximum use of internal and external resources to create an environment in which all members can demonstrate their abilities, and the President will exercise leadership to manage the university so that it can develop sustainably toward the future by bringing together the wisdom of the university.





# Faculties

## Faculty of Education



The faculty has the two courses of Kindergarten and Elementary School Education, and Elementary and Junior High School Education. The former has two majors: Kindergarten and Elementary School Education and Special Support Education. The latter also has two majors: Elementary School Education and Junior High School Education.

## Faculty of Economics



The faculty comprises of three Departments. The Department of Economics offers a handpicked range of subjects including Finance, Economic Policy, Inter-national Economics and Regional Economics. Students at the Department of Business Management have the opportunity to study various subjects pertaining to Accounts and Business Management. The Department of Economics and Law offers a number of subjects related to Law.

## Faculty of Art and Regional Design



The faculty is comprised of two courses: Fine Arts and Regional Design. The faculty aims to empower students with artistic methodologies and sensitivity so that they may connect people and products through art and contribute to regional and international development.

## Faculty of Medicine



The Department of Medicine aims at educating and training physicians who, in their creative practice of medicine, will be capable of grasping problems they encounter from a bioethical and sociocultural point of view as well as from a science-based medical point of view. The Department of Nursing aims at educating and training nursing professionals with a high regard for nursing ethics, capable of grasping health-related problems in a holistic manner and of solving such problems with expertise and flexibility.



## Faculties

### Faculty of Science and Engineering



The Faculty of Science and Engineering has one department with an educational program consisting of 13 courses that cover a wide range of subjects from science to engineering. The program has introduced a system that allows students to select courses step by step based on their aptitude and interest with an awareness of their future while being exposed to university education in a wide range of fields.

### Organization for General Education



The Organization for General Education offers various general education subjects as follows: University Admission subjects, Common Basic subjects (English and Information Literacy), Basic Liberal Arts subjects, and Interface subjects.

### Faculty of Agriculture



The Faculty of Agriculture has one department including four courses. We offer students opportunities to learn Integrated Science, which focuses on Sustainable Food Production and Conservation of the Natural Environment, and Advanced Science, which focuses on the Elucidation and Application of Bioscience. Currently, we are faced with many serious issues, such as food supply and safety, environmental preservation, information society, bioenergy, and local community, and our faculty has a variety of research fields that address these issues.



## Graduate Schools

### Graduate School of Teacher Education



The graduate school was newly established in April 2016. Setting the development of practical instructional skills as a goal, you learn through active methods such as case studies and mock class-room instructions. The Master of Teacher Education Program provides you with opportunities to acquire a high level of teaching abilities through curriculum bridging theory and practice.

### Graduate School of Regional Design in Art and Economics



The graduate school was jointly established with the Faculty of Art and Regional Design and the Faculty of Economics. There are two educational courses: the Art and Design Course and the Regional Management Course. Within this structure, three areas of specialization are offered, including Art, Field Design and Economics & Management.

### Graduate School of Medical Science



The graduate school aims at educating and training researchers and professionals in the field of medicine and health care who can play an effective role in education, research and medical treatment with high-grade knowledge and expertise in education, research and medical practice.

### Graduate School of Advanced Health Sciences



In this graduate school, the Faculties of Science and Engineering, Agriculture, and Medicine/ Nursing are organically cooperating with one another in a community-based style to achieve the following two aims: (1) technological innovation suitable for each new-epoch industrial demand (2) synthetic application of state-of-the-art technology to every medical/nursing/clinical field.



## Graduate Schools

### Graduate School of Science and Engineering



The graduate school consists of one department of Science and Engineering, and by adopting a course system for each specialized field, it is possible to flexibly construct an education implementation framework and further facilitate collaboration among specialized fields in education and research.

### Graduate School of Agriculture



The mission of the Graduate School is to educate personnel who will become highly creative scientists and specialists in agricultural and life sciences with advanced specialized knowledge and skills to meet social and international needs in the recent era of advanced science and technology, information technology, and internationalization.

### The United Graduate School of Agricultural Sciences, Kagoshima University



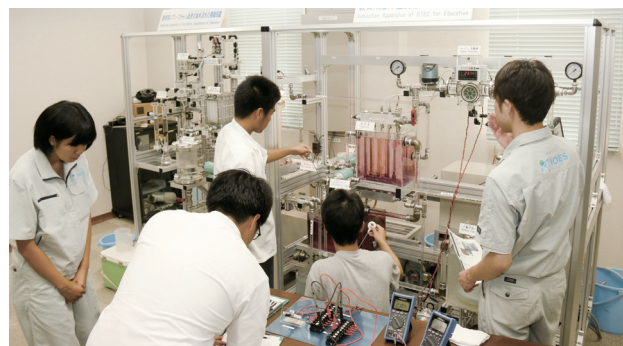
The graduate school was established as a joint institute that integrates the teaching staff and research facilities of the Master's Courses in Agriculture at Saga University, Agriculture, Forestry and Fisheries at Kagoshima University, and Agriculture at the University of the Ryukyus.



# Institutions

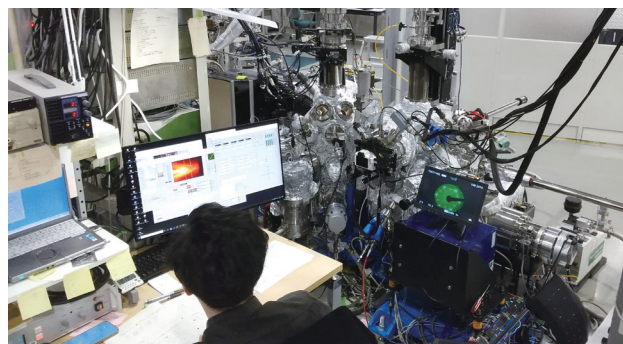
## Institute of Ocean Energy

The institute contributes to solving 21st century global scale problems on energy and environment by establishing a research base and promoting research education concerning Ocean Energy comprehensively and interdisciplinary as an international pioneering bridgehead which promotes research and education and also science and technology concerning Ocean Energy strategically.



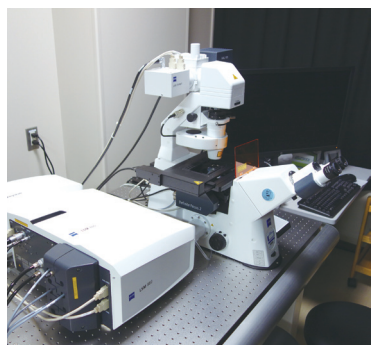
## Synchrotron Light Application Center

The center was established not only to support and cooperate with the Saga Prefecture Synchrotron Light Application Project from an academic standpoint, but also to aim to be the core of the region related to synchrotron light application research and to have the most academic advanced research.



## Analytical Research Center for Experimental Sciences

The center is a joint use facility which was established for Education Research Support and has four sections each on Honjo and Nabeshima Campuses: Biological Resource Development Section, Instrumental Analysis Section, Radioisotope Use Section, and Environmental Safety Section.





## Institutions

### Ceramic Research Center of Saga University

The center aims to contribute to the revitalization of “Hizen”, in the north-west area of Kyushu, by becoming an international academic research base of ceramics where art, science and management fields merge.

This center is located on the Arita Campus where students study ceramics and ceramic engineering.



### Center for Regional Culture and History

Since ancient times and through the Middle Ages, Saga has built up a unique exchange relationship with each country in Asia, made active cultural contact with Europe in the early modern times, and innovated using modern Western European civilization and academic systems in the latter half of the 19th century. This Center explores the identity and universality of the Saga region and creates Regional Study as a new academic system.

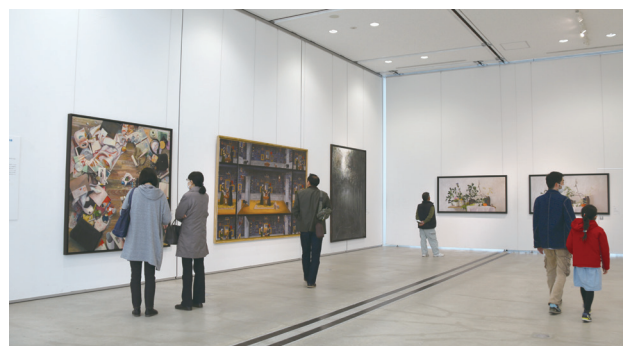




## Institutions

### Saga University Art Museum

In October, 2013, Saga University Art Museum opened as a new symbol of the University in the front gate area of Honjo Campus. This is a memorial building for the 10th anniversary of the integration of the former Saga University and Saga Medical School. It is aimed to be utilized for education and study, and to exhibit, collect and preserve works of art, as well as to promote art and culture as a tool towards area community service.



### University Library

The main library has more than 500 reading seats, several group study rooms, a multimedia corner, the multipurpose study space, private reading rooms and learning commons where Wireless LAN are provided for information retrieval through the network.

The medical library has 244 reading seats and personal computers for information access and study space. Valuable information concerning medicine and science is provided for independent study.





# Center for Promotion of International Exchange

## Roles of the Center

<https://www.irdc.saga-u.ac.jp/>



- Overseas dispatch of students
- Acceptance of international students and researchers
- Establishment of systems for support of internationalization of the university
- Development of projects for internationalization in collaboration with regional community and companies
- Promotion of projects for international exchange based on the international strategic framework



## Interview of International Students



**Lulie**  
(from Ethiopia)

**Q Why did you choose to study in Saga University?**

I got supervisor in Saga and we communicated each other like we developed my work together in my country so I decided to come to Saga. And it's a good university. It's a little bit small but there are many international students. I like the city too. It's a small city but we can explore by bike.

**Q What are you currently studying in Saga?**

Currently I'm a research student and studying about tropical crops.

**Q How is your life in Saga?**

I like it. I have a good tutor and good friends. It's early to say this but it's good and I'm still adapting.



**Mustofa**  
(from Indonesia)

**Q How is your life in Saga?**

I got used to living here. But I was surprised by climate change when I landed in Japan. I felt really cold because in Indonesia it was like 30°C but the weather suddenly became like 9°C. We rarely face the cold weather in Indonesia.

**Q It's your 2nd time in Saga. What do you like the most about Saga?**

In 2017, when I came to Saga for the first time, I had no idea about Japanese cultures and habits. But as I kept learning Japanese language and more and more about Saga, I started to fall in love with Saga and I was always desperate to come back here again after going back to Indonesia.



Full Interview



# Program for International Students

## Exchange Program (for partner universities)

- SPACE Program
- Special Research Student Program (only for postgraduate students)

## Short-term Program (for partner universities)

- SUSP(Saga University Summer Program)

## Degree Seeking Program

- Education Program for AI and Data Science Specialists (EPAD)(Master's and Doctoral Course)
- Education Program of Advanced T-shaped Person for Co-development of ASEAN and Japan (EPAT)(Master's and Doctoral Course)
- Strategic International Postgraduate Program (SIPOP) (Doctoral Course)
- Post-graduate Program for Global Human-resources Development (PPGHD)

## Support for International Students

- Tutor System
- Japanese-Language Education for International students

## Accommodation / Apartments

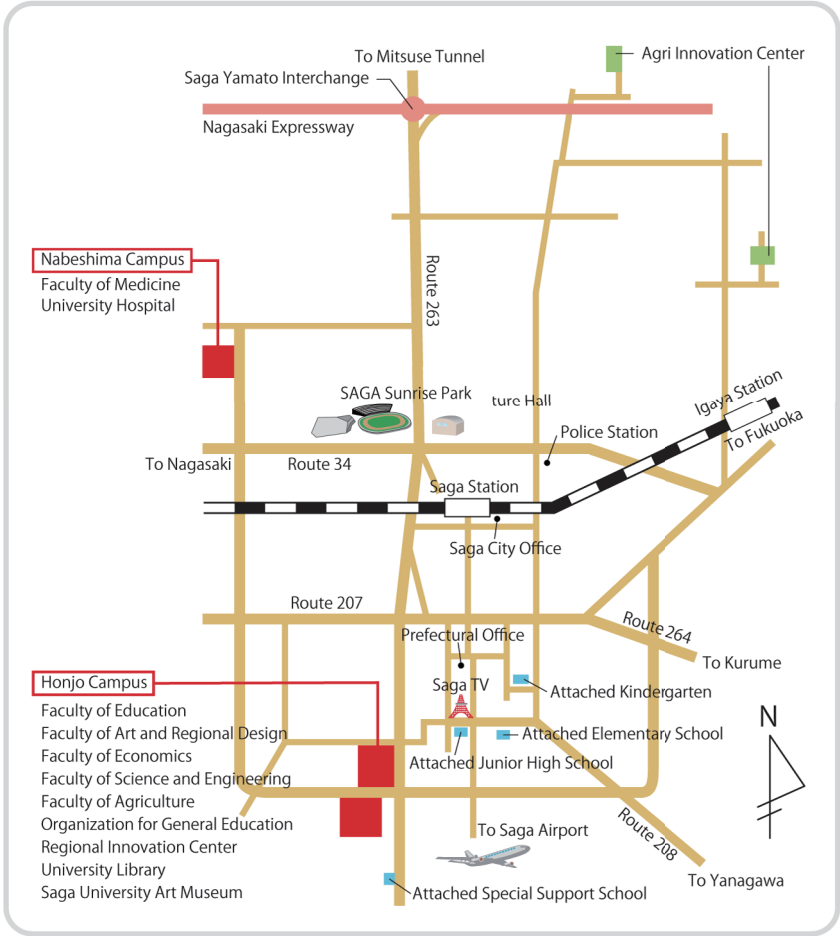
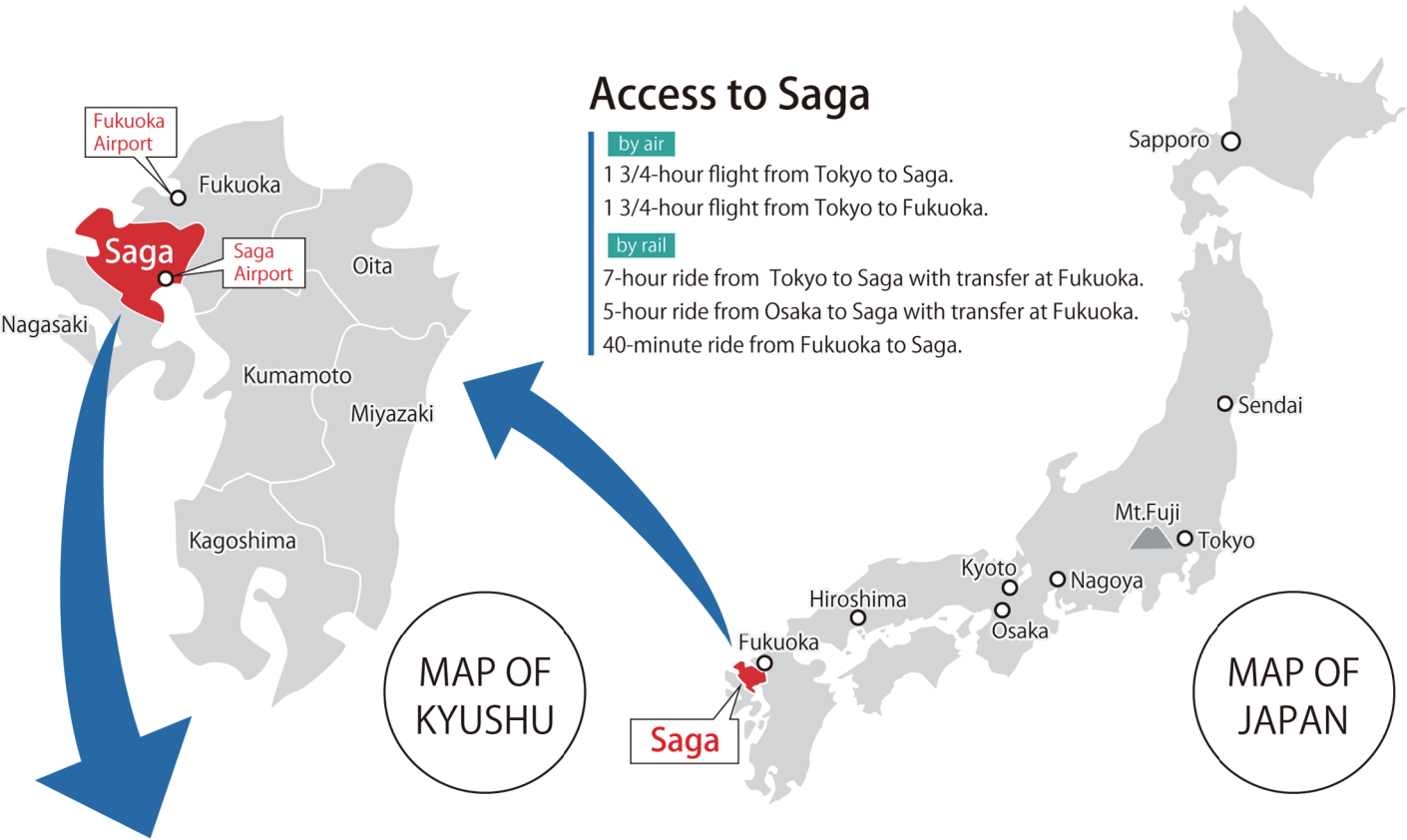
- International House
- City / Prefectural Housing



[More details](#)



# Access to Saga University



- To Nabeshima Campus from Honjo Campus  
about 6.5Km
- To JR Saga Station from Honjo Campus  
about 4.0Km
- To JR Saga Station from Nabeshima Campus  
about 5.0Km
- To Arita Station from Arita Campus  
about 1.2Km
- To Honjo Campus from Arita Campus  
about 50Km